

## **Architects**

### **Supplemental Instructions**

**Project:**

*Rifle Fire Protection District  
Fire Station #3  
416 Last Chance Drive  
Rifle, CO 81650*

**Architect's Supplemental  
Instruction NO: 5**

**Owner:**

*Rifle Fire Protection District  
1850 Railroad Ave.  
Parachute, CO 81635*

**Date of Issuance:** September 01, 2009

**To Contractor:**

*Kuersten Construction LLC  
0013 Powerline Road  
Rifle, CO 81650*

**Architect:**

*Johnson-Carter Architects, PC.  
136 East Third Street; Suite B  
Rifle, CO 81650*

**Contract For:**

*Design Services*

**Architect's Project NO:**

*0808F*

**Contract Dated:**

*Nov. 20, 2008*

---

The Work shall be carried out in accordance with the following supplemental instructions issued in accordance with the Contract Documents without change in Contract Sum or Contract Time. Proceeding with the Work in accordance with these instructions indicates your acknowledgement that there will be no change in the Contract Sum or Contract Time.

**Description:**

*Refer to the attached sheet for the revised south elevation. There is no graphical change to the elevation – the text 'stucco finish' (which was pointing to the masonry wall) has been removed from the attached drawing.*

**Attachments:**

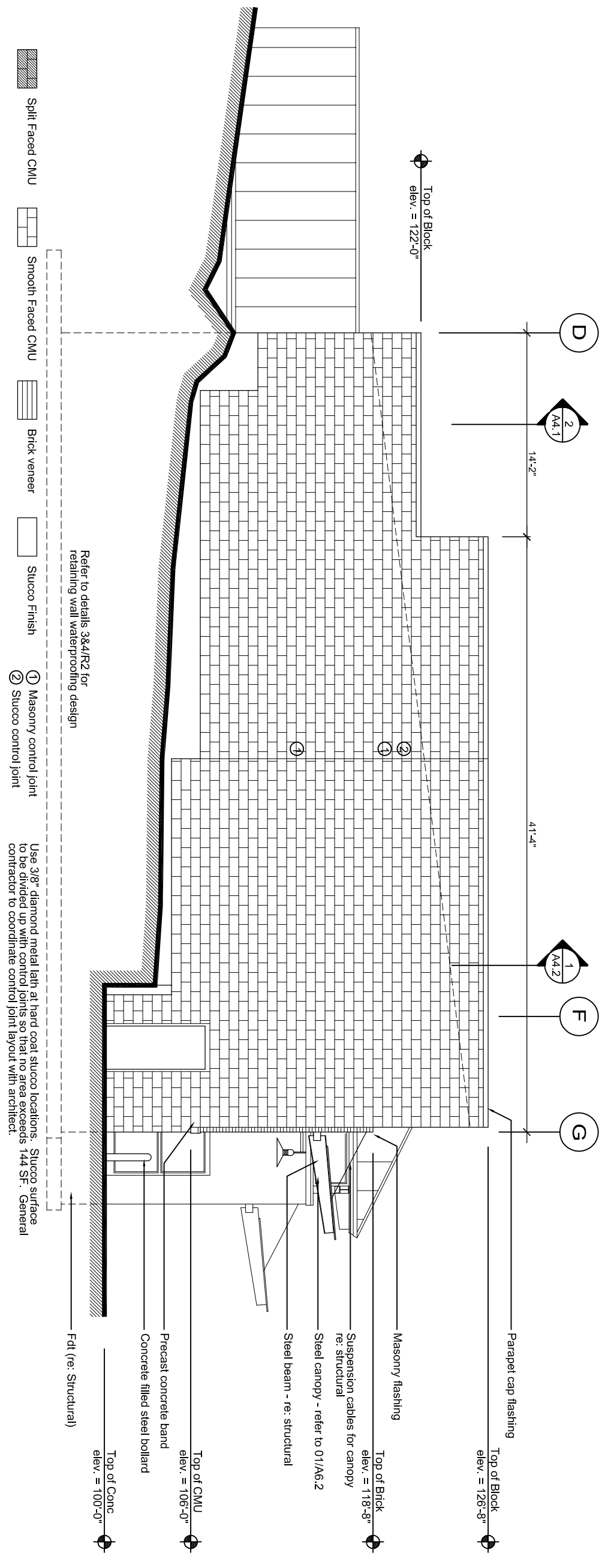
*South Elevation*

---

**Issued By:**

*Richard Carter (Owner/Architect)*

**Architect**



Top of Block  
elev. = 122'-0"

D

2  
A4.1

14'-2"

41'-4"

1  
A4.2

F

G

Parapet cap flashing

Top of Block  
elev. = 126'-8"

Masonry flashing

Top of Brick  
elev. = 118'-8"

Suspension cables for canopy  
re: structural

Steel canopy - refer to 01/A6.2

Steel beam - re: structural

Top of CMU  
elev. = 106'-0"

Precast concrete band

Concrete filled steel bollard

Top of Conc  
elev. = 100'-0"

Fdt (re: Structural)

Refer to details 384/R2 for  
retaining wall waterproofing design

Split Faced CMU



Smooth Faced CMU



Brick veneer



Stucco Finish



① Masonry control joint  
② Stucco control joint

Use 3/8" diameter metal lath at hard coat stucco locations. Stucco surface to be divided up with control joints so that no area exceeds 144 SF. General contractor to coordinate control joint layout with architect.