

## Request for Information

**Contractor:** Kuersten Construction  
Address: 0013 Powerline Road  
City, State: Rifle Colorado  
Zip: 81650  
Phone: 970-625-8210

**A/E:** Johnson & Carter Architects  
Address: 136 East 3rd Street Suite B  
City, State: Rifle, Colorado 81650  
Zip: 81650  
Phone: 970-625-0580

**Project:** RFPD Fire Station #3  
RFI Number: 29  
Date: 9/1/2009

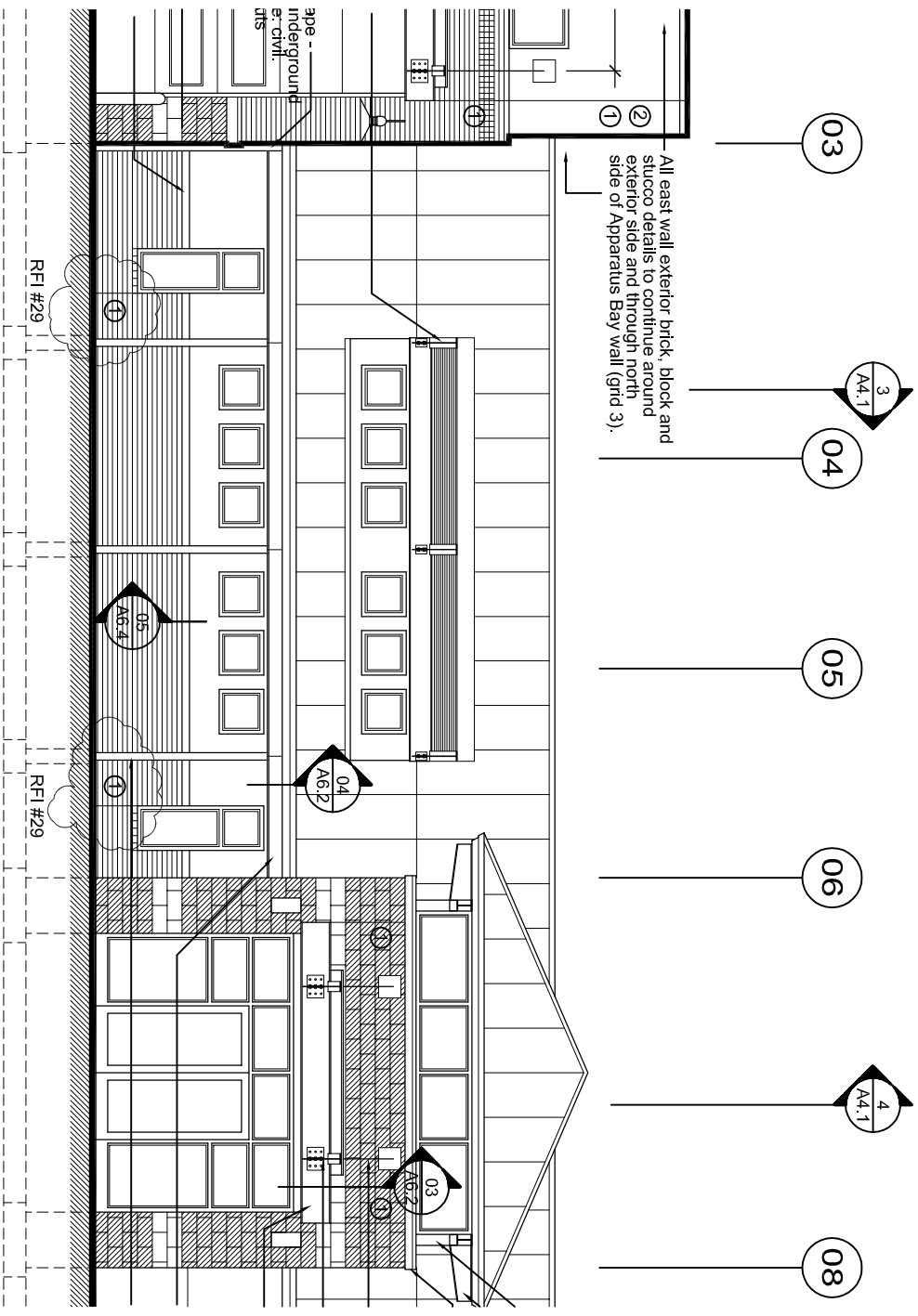
### RFI DESCRIPTION: (Fully describe the question or type of information requested.)

May we get a layout of masonry control joints, or can we put them where we would like as long as we never have more than 35' of wall without a control joint?

### SENDER'S RECOMMENDATION:

### RECEIVER'S REPLY: (Provide answer to RFI, including cost and/or schedule considerations.)

*Refer to attached elevations for missing control joint locations. Control joints at the north side of the Apparatus Bay to match those indicated on the south elevation. Control joints at the entry tower south side to match those indicated on the entry tower north side. Control joints at the entry tower west side to match those indicated on the entry tower east side.*



03

3  
A6.1

04

05

06

4  
A6.1

08

1  
2

All east wall exterior brick, block and stucco details to continue around exterior side and through north side of Apparatus Bay wall (grid 3).

RFI #29

RFI #29

1

1

1

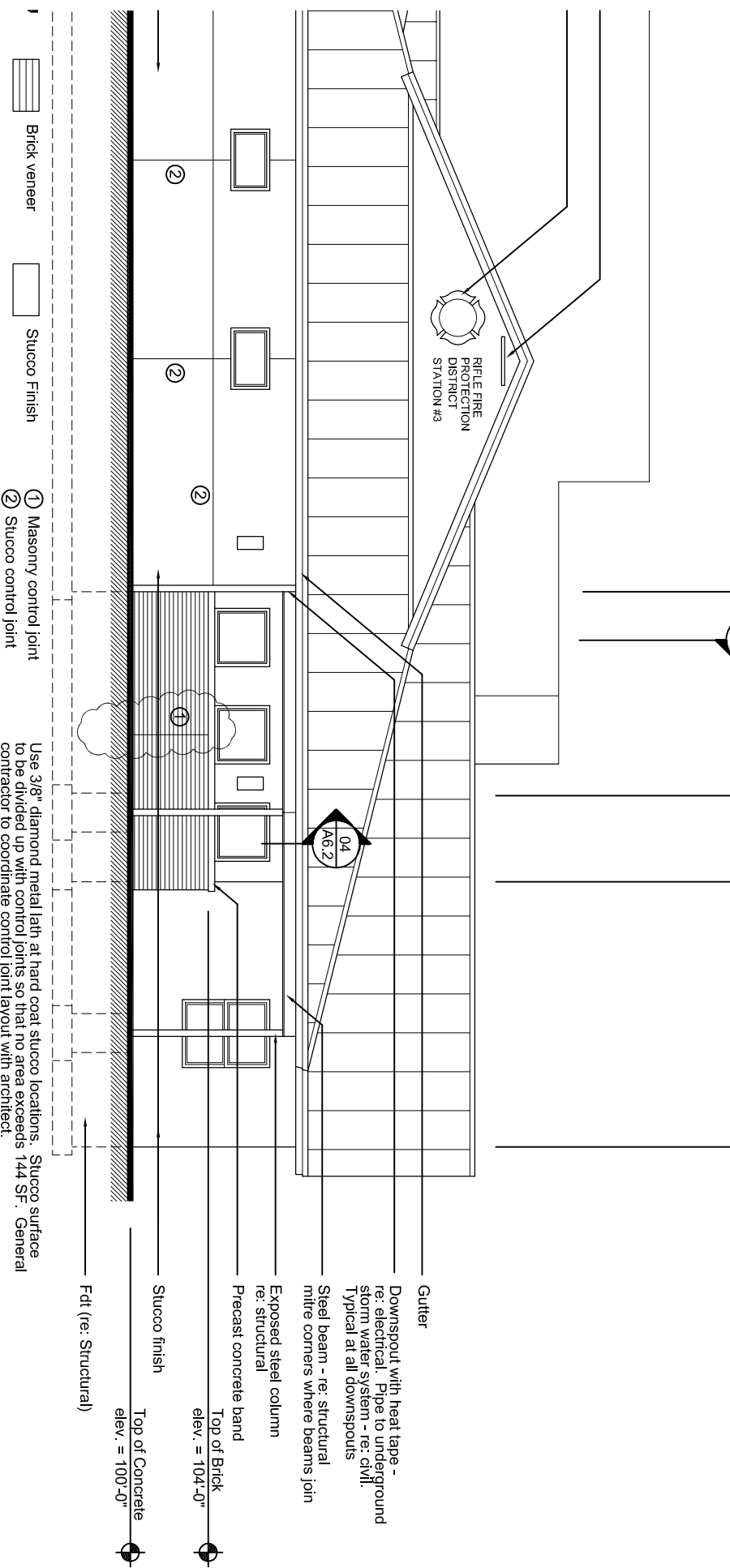
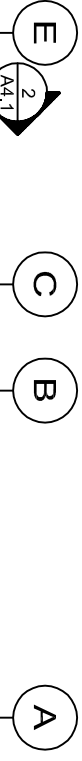
Apparatus Bay  
Underground  
Civil

05  
A6.4

04  
A6.2

03  
A6.3

RIFLE FIRE PROTECTION DISTRICT STATION #3



Gutter  
 Downspout with heat tape - re: electrical. Pipe to underground storm water system - re: civil. Typical at all downspouts  
 Steel beam - re: structural mitre corners where beams join

Exposed steel column re: structural  
 Precast concrete band

Top of Brick elev. = 104'-0"  
 Top of Concrete elev. = 100'-0"

Fdt. (re: Structural)

- ① Masonry control joint
- ② Stucco control joint

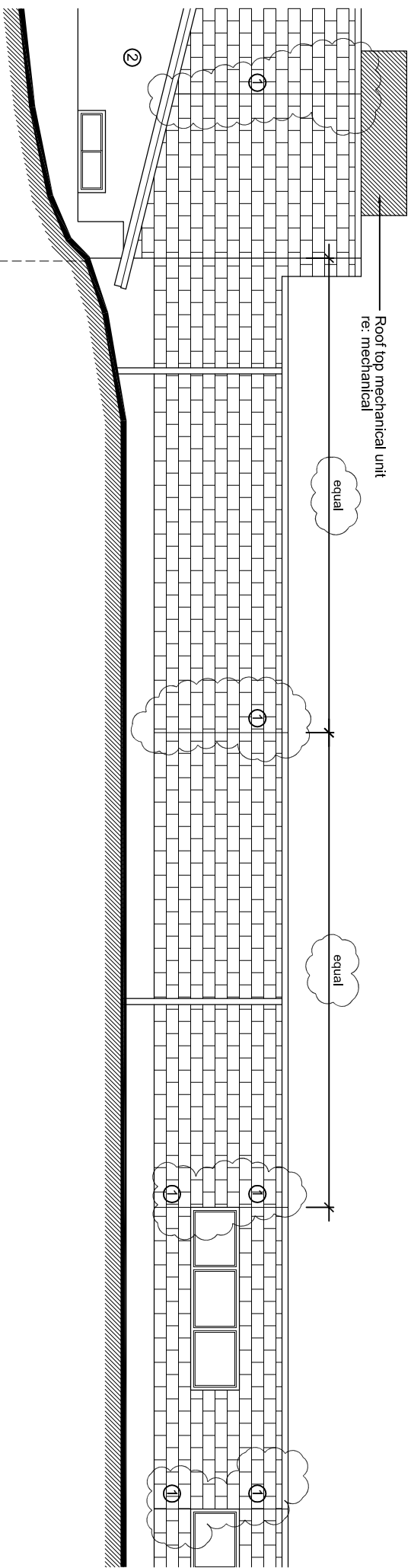
Use 3/8" diamond metal lath at hard coat stucco locations: to be divided up with control joints so that no area exceeds 144 Sq. Ft. General contractor to coordinate control joint layout with architect.

- Brick veneer
- Stucco Finish

02

A4.1

A4.1



Roof top mechanical unit  
re: mechanical

equal

equal

384/R2 for  
waterproofing design

Refer to details 384/R2 for  
retaining wall waterproofing design

allions. Stucco surface  
exceeds 144 SF. General  
contract

